



NAAC A+ ACCREDITED
REGIONAL INSTITUTE OF EDUCATION,
BHOPAL

PROSPECTUS

REGIONAL INSTITUTE OF EDUCATION, BHOPAL
(National Council of Educational Research and Training)

Shyamla Hills, Bhopal (M.P.) - 462002
0755-2661463, 2661668, email-principal@riebhopal.in, riebhopal.nic.in
www.twitter.com.riebhopla, RIE Bhopal official

CONTENTS

- ❖ *Vision & Mission*
- ❖ *From the Principal's Desk*
- ❖ *Introduction*
- ❖ *Roles and Functions*
- ❖ *Organisation Structure*
- ❖ *Academic Programmes Offered*
- ❖ *Student Admission Rules*
- ❖ *Fee Structure*
- ❖ *Departments & Faculties*
- ❖ *Facilities at the Campus*
- ❖ *Committees/Cells/Association*
- ❖ *Institute's Salient Features*
- ❖ *Important Links*

VISION

RIE Bhopal, is committed to educational excellence, equity, quality and constant pursuit of knowledge in the areas of school and teacher education to achieve the goals of NCERT. **The vision of RIE Bhopal is to provide inclusive, value based and equitable quality education and creating a culture of excellence in teacher education for enabling the building of just equitable and a sustainable society and thereby contributing towards national development.**



MISSION

- ❖ Inspires students to learn and facilitate for their overall development: intellectual, physical, and emotional.
- ❖ Motivates students for learning throughout life.
- ❖ Prepares and empowers students to be successful by helping them develop their knowledge, skills and abilities needed to progress within the institution.
- ❖ Empowers them to adapt and thrive in our increasingly diverse and ever-changing world.

FROM THE PRINCIPAL'S DESK:

Dear Students,

Welcome to the Regional Institute of Education!

The Regional Institute of Education (RIE) Bhopal is a constituent unit of the National Council of Educational Research and Training (NCERT), which is an apex body of the Ministry of Education Government of India. The Institute was established in 1963 with the aim of improving the quality of school education in the Western Region, which comprises the states of Chhattisgarh, Goa, Gujarat, Madhya Pradesh, Maharashtra, and the Union Territories of Dadra and Nagar Haveli and Daman and Diu. RIE Bhopal, affiliated to Barkatullah University, Bhopal offers various teacher education programmes that are recognized by the National Council for Teacher Education (NCTE). The Institute offers Four-year integrated B.A.Ed., B.Sc. B.Ed., Two-year B.Ed., Three-year integrated B.Ed.M.Ed., and Two-year M.Ed. programmes. Additionally, a Diploma Course in Guidance and Counselling (DCGC) is offered in blended mode. The Institute accredited with an A+ grade by the National Assessment and Accreditation Council (NAAC) in 2016. The faculty of the Institute is involved in guiding research scholars enrolled for Ph.D. programmes in various subjects with Barkatullah University, Bhopal. Moreover, Institute is a recognized research centre of B.U. Bhopal for conducting Ph.D. course work in the subject of Education.



I appreciate you considering the Regional Institute of Education, Bhopal as your next academic institution and look forward to welcome you!

With best wishes,

Prof. V. K. Kakaria

INTRODUCTION

Regional Institute of Education (RIE), Bhopal is a constituent unit of NCERT, New Delhi. The Institute looks after teacher education and other educational requirements of the States of Chhattisgarh, Goa, Gujarat, Madhya Pradesh, Maharashtra and UTs of Dadra and Nagar Haveli and Daman and Diu.

The Institute was setup in 1963 by the Government of India with the objective of bringing about improvement in the quality of school education through research innovations, development of learning resources, and organisation of programmes for key educational functionaries including teachers, teacher educators and academic learners.

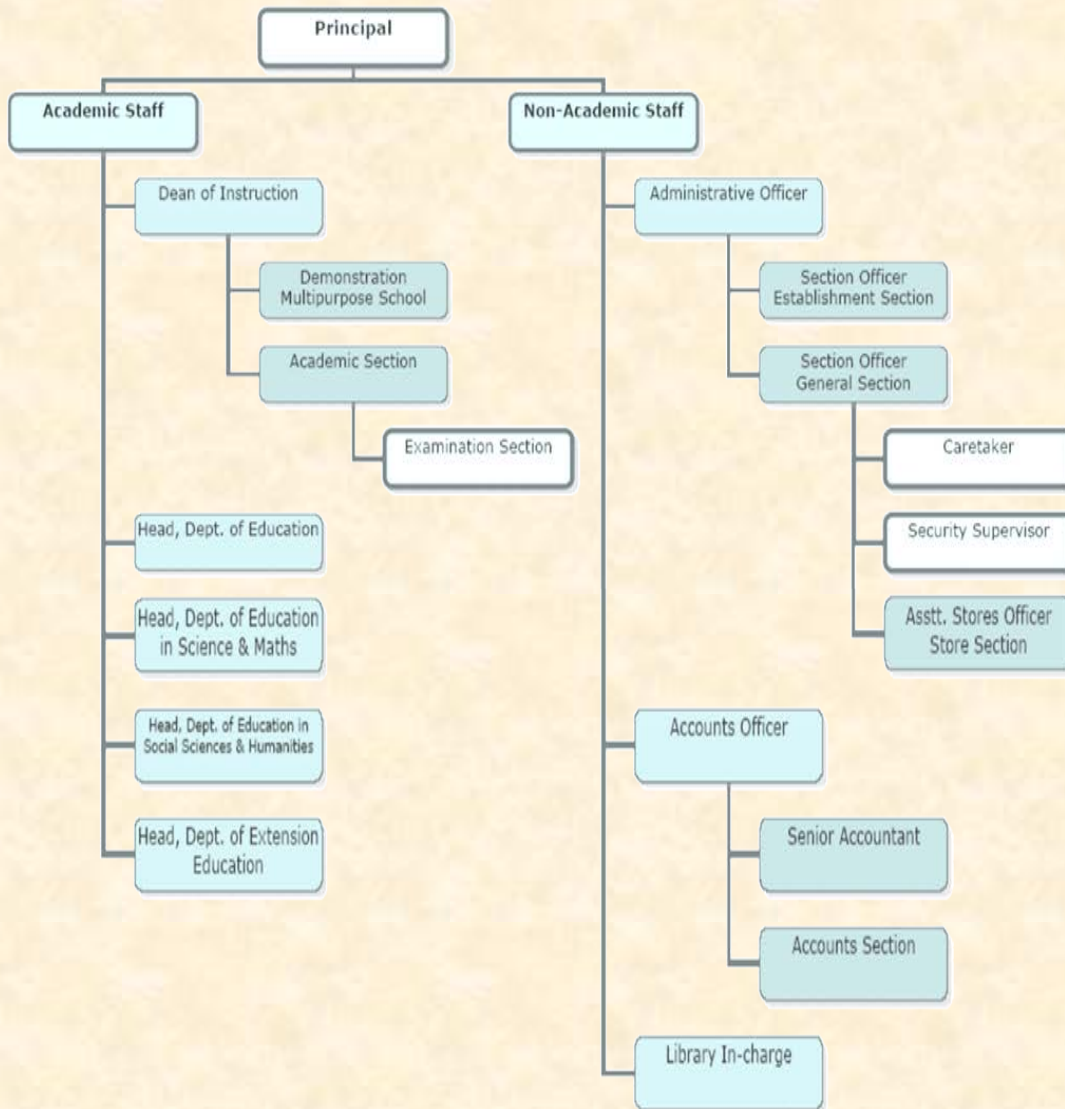
Participative management is an integral part of working at Regional Institute of Education, Bhopal. This ensures enhancing the morale, commitment and enthusiasm among the faculty members along with realizing of institutional goals. Responsibilities are delegated in the beginning of each academic year to various committees that are set up for smooth and quality carrying out of various activities of the Institute. There is a committee for looking into admission related procedures, conducting of university examinations, liaising with university and other related works. There are committees for literary, scientific, cultural and sports activities. Besides, there are house advisors to guide students of each house for preparing for these activities. These ensure innovative activities to provide platform to students to nurture and showcase their talents. Grievance Committee and anti- ragging committee has been set up to look into the problems of students. Similarly, an internal complaint committee has been set up to resolve any issues of faculty members. As RIE, Bhopal, caters to the educational requirements in training and research of India's western region – Maharashtra, Goa, Gujarat, Madhya Pradesh, Chhattisgarh, Daman, Diu and Dadar and Nagar Haveli, state coordinators have been appointed to co-ordinate with each state and union territory. Internship committee ensures the running of internship program smoothly and coordinates with various Kendriya Vidyalaya, Navodaya schools, JNV's and state government schools for placing students for school experience in teaching and other spheres of school life. Placement cell coordinates with premier institutes who visit the institution for campus placements. Through these integrated and coordinated efforts, there is 100 percent placement of students of RIE, in premium educational institutes of India. Committees such as Library committee, ensure procurement of quality books and journals. Attendance committee monitors and ensure the regularity of students in their classes. Committees such as Hindi committee ensure the widespread use and carrying out of work in Hindi language. Besides, the committee also conducts various activities for the promotion of Hindi language. NCC is effectively conducted by the NCC officer and NSS activities like blood donation camps, cleanliness drive and other activities related to social causes are conducted by NSS committee. These activities sensitize students towards their commitment and responsibility towards Nation. Besides, there are various other committees to ensure smooth and quality work in other areas of institutional activities.



ROLES AND FUNCTIONS

- To act as resource institute for conducting research, developmental activities and training in the areas pertaining to school education and teacher education.
- To act as monitoring and co-ordination agency for effective implementation of centrally sponsored schemes in the field of school education.
- To prepare quality teachers and teacher educators at all levels of school education through various pre-service courses and in-service teacher training programmes.
- To undertake pilot studies and research projects on all aspects of school education.
- To conduct in-service training programmes for teachers, teacher-educators, supervisors and administrators, concerned with school education as per the needs of the States and UTs of the region.
- To act as support system for state agencies and institutions like RSKs, SCERTs, DIETs, CTEs, IASEs, Block Education Centres in the Western Region.
- To develop instructional and supplementary learning material for school education and teacher education.

ORGANIZATION STRUCTURE



ACADEMIC PROGRAMMES OFFERED

The entire courses offered at RIE Bhopal are designed in the manner that after completing the course, the programme learning outcomes and the course learning outcomes are reflected in the learner's personality. All the courses that are offered at RIE Bhopal are listed below. The description gives a reflection of PLOs of all the courses offered here.

Four-Year B.Sc. B.Ed. Programme

The four-year B.Sc.Ed course, the first of its kind in the country, provides for complete integration of content and pedagogy evenly distributed throughout the duration of the course. The students, drawn from the western region are admitted to the course every year, they are groomed well both in content and pedagogy. The two groups opt for PCM (Physics, Chemistry and Mathematics) and CBZ (Chemistry, Botany and Zoology) enable them to become TGTs of Maths/Science and TGTs of Science respectively. The medium of instruction is English but they are competent to teach through Hindi/English medium. An eight-week internship programme for B.Sc.B.Ed. students in the fourth year provides them school experience under SEP (School Experience Programme) which eventually enables them to develop the competencies they would require for imparting quality education in future. Field Work with Community is one of the activities students of B.Sc. B.Ed., B.A. B.Ed. and B.Ed. are involved in besides Work Experience, Physical Education, and Aesthetic Education. It exposes them to the realities of life that help them develop the skills they would require while interacting with the community in future.

Four Year B.A.B.Ed.

This course also provides complete integration of content (Social Sciences and Humanities) and Pedagogy evenly distributed throughout the duration of the course. The Students, drawn from western region are admitted to the course every year. They opt for one Language (Hindi/English/Urdu/Marathi/Gujrati) and two Social Science subjects (Histry/Geog. and Eco./Pol.Sc.) as optional to enable them to become TGT (Soc. Science) and TGT (Language). The medium of instruction is English but they are competent to teach

through Hindi/English medium. The course is designed so that after completing the course, the learner is able to Apply the knowledge of the nature, scope and importance of studying humanities and social sciences in real life situations; Recognize, create, and use evaluation and assessment processes using both conventional and digital resources; Gain competence in delivering lessons, simulations, and microteaching in supervised and independent settings, as well as critically analysing, observing, and reporting the same, and many more.

Two Year B.Ed.

The Two-year course, based on the recommendations of the National Council for Teacher Education (NCTE), and designed to meet the professional requirements of secondary school teachers, provides quality teachers for secondary schools in Science and Mathematics, and Languages and Social Sciences. The students, drawn from the western region and admitted to the course every year opt for either Science and Mathematics or Social Sciences and Languages. This entitles them to become efficient teachers of Science/Mathematics, and Social Science and Languages respectively. Students from Social Sciences and Languages group have to study any of the five languages- Hindi, English, Urdu, Gujarati and Marathi. The language that they study during the period enables them to become language teachers of the language concerned.

History, Geography, Political Science, and Economics are well integrated and taught as a single subject. The course is so designed that the students are well versed in content as well as pedagogy. This enables them to become quality teachers of Social Sciences taught as a single subject at schools at the secondary level. A three- to- four-week programme for B.Ed. Ist year students, and an eight-week programme for B.Ed. 2nd year students, provides them school experience under SEP (School Experience Programme) which eventually enables them to develop the competencies they would require for imparting quality education in future. Field Work with Community is one of the activities in which students of B.Ed. are involved, besides Work Experience, Physical Education, and Aesthetic Education. It exposes them to the realities of life that help them develop the skills they would require while interacting with the community in future.

Two Year M.Ed.

The two-year M.Ed. (RIE) course is designed on the approval of NCTE to cater to the needs of Teacher Training Institutions. It prepares teacher educators to work in the area of teacher education. The special feature of the course is to prepare teacher educators for Educational Research and field based studies especially in the area of Education.

Three Year B.Ed.M.Ed.

The B.Ed.M.Ed.(Integrated) Programme is a three-year full time professional programme in education, without any option of intermediate exit before completing three years of study. It aims at preparing teacher educators and other professionals in education including curriculum developers, educational policy analysts, educational planners and administrators, school principals, supervisors, and researchers in the field of education. The completion of the programme shall lead to integrated B.Ed.M.Ed. degree with specialisation in either elementary education or secondary and senior secondary education. This programme currently offered only in RIE, Bhopal. Through CEE candidates from all over the country will have an opportunity to get admission to this course in RIE, Bhopal.

Diploma Course in Guidance and Counseling (DCGC)

The Course aims to train in-service teacher educators, educational administrators and untrained guidance personnel as counselors or teacher counselors to guide and counsel students in school and related settings. In order to make the course accessible to large numbers, this course has now been redesigned with components of distance/online and face to face mode. A practicum (internship) of DCGC programme is organized for eight weeks for field practical training and assessment. For more information about this course, visit: www.ncert-idgc.org.

Ph.D.

The students are enrolled in Ph.D. Programme in Education, Languages, Science (Physics, Chemistry, Botany, Zoology and Mathematics). The students are admitted through Barkatullah University-Doctoral Entrance Test (D.E.T).

Programme Learning Outcomes:

Programme Learning Outcomes (PLO) of four year integrated B.Sc.B.Ed.

On successful completion of the four-year integrated B.Sc. B.Ed. programme, the students will be able to:-

- Conceptualize disciplinary knowledge in Science including Physics, Chemistry, Botany, Zoology and Mathematics.
- Select and use learner centric constructivist approaches, strategies and methods such as inquiry based, cooperative and collaborative learning; necessary competencies for organizing learning experiences; and designing appropriate assessment strategies for facilitating Science and Mathematics learning.
- Design, develop and evaluate Science and Mathematics concepts.
- Integrate Technology, Pedagogy and Content (TPACK) in Science including Physics, Chemistry, Botany, Zoology and Mathematics curriculum.
- Exhibit 21st century skills in research, teaching and professional practices, including assessment, administration, supervision, curriculum design and development.
- Communicate effectively the acquired knowledge with scientific community and society at large and apply ICT for better delivery in classroom and beyond.
- Apply disciplinary knowledge to solve varied problems, including problems related to teaching-learning and assessment.
- Identify the classroom diversities and deal with diverse learners in inclusive classroom setup.
- Demonstrate core capacities and skills in career counseling, curriculum development, instructional technology, educational planning and research, etc.
- Exhibit self-directed learning and assessment, e.g. reading with comprehension, preparing scripts for seminars, self-assessment, habit of reading, metacognition, etc.
- Exhibit entrepreneurship and employability skills in different fields of science, mathematics and education.
- Work as a team member or leader in inter-disciplinary and multi-disciplinary settings through collaborative learning, cooperative learning and team teaching during internship/project work.
- Practice Research and Scientific enquiry to promote scientific temper and contextualized learning.
- Apply knowledge, scientific principles and pedagogy in managing projects.
- Mobilize community to promote scientific temper and scientific practices so as to contribute to the advancement of evidence-based rational knowledge.

Programme Learning Outcomes (PLO) of four year integrated B.A B.Ed

The Learners will

- Apply the knowledge of the nature, scope and importance of studying humanities and social sciences in real life situations
- Develop skills for reflecting and analysing knowledge of facts and numbers in a variety of literary, social science and educational areas.
- Develop the capacity to generate unbiased conclusions after critically studying evidence and acquiring analytical, synthesis, and problem-solving abilities
- Recognize and appreciate nuances and complexity of meaning through critical reflections on texts, visual images and artifacts
- Acquire aptitude for using technology and integrate it with content and pedagogy
- Apply knowledge of facts, principles, and laws to comprehend the importance of phenomena in daily life.
- Possess a fundamental understanding of educational psychology, educational sociology, educational philosophy, and educational research, and apply these principles to enhance classroom instruction.
- Demonstrate good communication skills in the classroom by communicating effectively while listening, speaking, reading, and writing.
- Develop the ability to observe and make logical deductions from experiments and phenomena in social science, psychology, philosophy, and literature..
- Practise to live a life of mental wellbeing and global citizenship by imbibing ethical, moral, and social ideals.
- Acquire skills such as self-awareness, interpersonal communication, leadership, teamwork, and other teaching and management techniques use them to live a competent and dedicated life as an educator and a responsible citizen.
- Demonstrate the ability to participate in extracurricular and curricular social, educational, and cultural activities and apply the acquired skills in real life situations
- Recognize and reflect on Indian knowledge systems and apply them in the classroom to ensure the development of responsible citizens
- Develop the capacity to recognise, classify, and apply individual characteristics, including personality, creativity, learning disabilities, diversity, etc., in the creation of curriculum activities.
- Develop the capacity to communicate the ethos, constitutional principles, self-awareness, listening, reading, and writing skills, and incorporate them into the curriculum.
- Gain knowledge of the pedagogical process and the ability to use various microteaching approaches, practice teaching, teaching-learning strategies, and methods and techniques in curriculum transactions
- Recognize, develop, and create curricular transaction strategies that promote gender equality, diversity, inclusion, national and international goals, and other topics that are part of the curriculum.
- Recognize, create, and use evaluation and assessment processes using both conventional and digital resources

- Gain competence in delivering lessons, simulations, and microteaching in supervised and independent settings, as well as critically analysing, observing, and reporting the same

Use the right technologies to obtain, analyse, and manage information in order to prepare and present their work successfully. Do research on and communicate about language, culture, and philosophy.

Programme Learning Outcomes (PLO) of two year integrated B.Ed

On completion of B.Ed. two year programme pupil-teachers will be able to:

- Teaching Competency: Know, select and use of learner-centered teaching methods, understanding of paradigm shift in conceptualizing disciplinary knowledge in school curriculum, necessary competencies for organizing learning experiences, select and use of appropriate assessment strategies for facilitating learning.
- Pedagogical Skills: Applying teaching skills and dealing with classroom problems.
- Teaching through non-conventional modes: Evolving a system of education which enhances the potential of every learner to acquire, retain and transform knowledge leading to wisdom society through creative, experiential and joyful modes of learning.
- Critical thinking: Analysis of curriculum, construction of blue print selecting appropriate teaching strategies according to needs of students and conducting action research to solve classroom problems.
- Effective communication: presenting discussions, seminars before peer students and teachers and practicing communication skills through various linguistic activities and applying it for better classroom communication.
- 6. Sensitivity towards inclusion: Identifying the diversities and dealing it in inclusive classrooms environment, guidance and counselling programmes for disabled students.
- Effective citizen ethics: understand values, morality, social responsibilities for the society.
- Self-directed learning: preparing scripts for seminars, lesson plans and online content.
- Social resilience and to use technology: understand about social entities and to cope up with adverse conditions of life and train to use technology.
- Sensitivity towards environment: understand about the responsibilities regarding environment and ecosystem.
- Physical and mental health development: Physical education, games, sports and practice yoga, meditation and breathing for mental health.
- Team work: Enable to work as a member or leader in diverse teams and in multidisciplinary setting by following the principles of collaborative learning, co-operative learning, team teaching and focused group learning.
- Unity and national integration: Enable students to respect other religions and instill spirit of national integration through celebration of important days and festivals.

Programme Learning Outcomes (PLO) of three year integrated B.Ed-M.Ed.

The outcomes of the programme are to:

- Develop perspectives among learners towards child's learning and future societies
- Provide philosophical, sociological and psychological insights into education
- Reflect on the past and plan for the future demands of global society
- Develop skill of curriculum transaction in context of constructivist pedagogy in the aera of inclusiveness
- Integrate ICT and e-learning with classroom learning
- Cherish and practice the values enshrined in the constitution of India, like equality, liberty etc
- Uphold the professional ethics of teacher and its accountability
- Train in school leadership
- Develop awareness and attitudes regarding cross-curricular concerns

Programme Learning Outcomes (PLO) of two year integrated M.Ed.

M.Ed. 2 Year Programme Programme Learning Outcomes After Completion of two year M.Ed. Programme the learner will be able to:

- Develop teaching Competency and Observational Skills to learn teaching Competencies and to provide appropriate feedback during block teaching practice for pupil teacher (B.Ed.)
- The Course focuses how to face the life challenges and to solve different classroom as well as job problems successfully.
- Enable Leadership and management Skill among research scholars to deal effectively with their environment.
- Understand different research methods, equipping Scholars with relevant tools, techniques, familiarizing data collection, analysis by using statistical measures use of conceptual understanding in practical research work and writing a research report.
- Enhance the analytical and interpretation skills and to trained scholars in using statistical measures and, Software (SPSS) (MS Excel) etc.
- Attain higher knowledge and depth understanding about the subjects and emerging issues.
- Understand Social norms, Values, Cultures and educate the students according to the changing needs of the society and maintain ideal relationship between school and society through extension activities.

- Understand the use of technology to make teaching learning more effective and to familiarize about different apps, websites etc.

The link for the detailed PLOs and CLOs is

<https://riehopal.nic.in/IQAC/PLOS & CLOS All programmes.pdf>

STUDENT ADMISSION RULES

The Regional Institute of Education, Bhopal caters to the educational needs of the western region of the country comprising of the States of Madhya Pradesh, Chhattisgarh, Maharashtra, Gujarat, Goa and the UT of Daman & Diu and Dadra & Nagar Haveli. Programmes offered in RIE Bhopal are affiliated to Barkatullah University, Bhopal. **Admission to B.Ed., B.Ed.M.Ed., B.A.B.Ed., B.Sc. B.Ed., M.Ed. Programmes, of RIE is restricted to candidates having domicile in the States of Madhya Pradesh, Chhattisgarh, Maharashtra, Gujarat, Goa and the UT of Daman & Diu and Dadra & Nagar Haveli.**

1. Admission to all Degree Programmes shall be based on the merit of the students in **Common Entrance Exam (CEE)**.
2. No one shall be considered for admission unless he/she has appeared in the CEE.
3. The candidates are advised to remain in touch with the website <https://cee.ncert.gov.in/Default.aspx> for updated information.
4. Candidate must ensure that, they should have all the original documents of their respective qualifying examinations at the time of verification of Documents/Registration.
5. Ensuring the eligibility for applying to a particular Programme will be the sole responsibility of the candidate.

ELIGIBILITY & NO. OF SEATS

	PROGRAMME	ELIGIBILITY	SEATS
1.	B.Ed.	Candidates with at least 50% marks in Bachelor's Degree /Bachelor's in Engineering or Technology with specialization in Science or Mathematics or in Bachelor's Degree in Social Science/Humanities/Commerce are eligible for admission to the programme (relaxation of 5% marks for SC/ ST/PwD candidates).	44
2.	B.Ed.M.Ed.(INTEGRATED)	A postgraduate degree in Science/Social Sciences/Humanities from a recognized institution with a minimum 55% marks or equivalent grade {relaxation by 5% for SC/ST/PwD Candidates	40
3.	B.A.B.Ed.	Candidates must have passed +2 / Hr. Secondary/Sr. Secondary or equivalent examination in Science and Commerce streams or in Arts streams with at least 50% marks in aggregate (relaxation of 5% marks for SC/ ST/ PwD /EWS candidates) in 2019, 2020 and appearing/ appeared in 2021	44

	PROGRAMME	ELIGIBILITY	SEATS
4.	B.Sc.B.Ed.	<p>Candidates seeking admission to Physical Science Group (PCM) must have passed with Physics, Chemistry, and Mathematics (PCM) (Mathematics stands for Mathematics or Statistics) and,</p> <p>Those seeking admission to Biological Science Group (CBZ) must have passed Physics, Chemistry, and Biology (PCB) (Biology stands for Biology or Biotechnology) at +2 level.</p> <p>Candidates must have passed +2 / Hr. Sec./ Sr. Sec. or any equivalent examination recognized by University/ Board with at least 50% marks in aggregate of qualifying examination (relaxation of 5% marks for SC/ ST/PwD/EWS candidates). The qualifying examination should be recognized by the affiliated universities of the RIEs.</p> <p>Candidates who have passed +2 / Hr. Sec./ Sr. Sec. or any equivalent examination in 2019, 2020 and appearing/ appeared in 2021, only.</p>	88 (44+44) (P + B)
5.	M.Ed.	<p>Candidates seeking admission to the M.Ed. Programme should have obtained at least 50% marks or an equivalent grade {relaxation by 5% for SC/ST/PwD/EWS Candidates} in the following programmes / courses from any University / College / Institute recognized by affiliating universities:</p> <p>B.Ed.</p> <p>B.A.B.Ed./B.A.Ed/B.Sc.B.Ed/B.Sc.Ed.</p> <p>B.El.Ed.</p> <p>D.El.Ed. with a Bachelor's degree in Arts/Science (With 50% marks in each)</p>	33

Reservation of Seats

As per the Government of India rules candidates belonging to certain categories are admitted to seats reserved for them based on relaxed criteria. The following reservations are available SC 15%, ST 7.5%, OBC 27%, PwD 5% , EWS 5%. Candidates applying under reservation quota will be considered only on the basis of the lists notified by the Government of India and the category certificate/ PwDcertificate in the format approved by the GOI and issued by the competent authority. OBC candidates will have to attach a certificate from competent authority stating thathe/she does not belong to creamy layer.

Other General Information

The candidates are expected to fill the form online. Please refer to how to apply on the portal for complete step-by-step information. The candidates have to download the admit card by using login credentials from online application system web link. The candidates for common entrance examination have the option to apply online only. The fee for application is Rs. 1000/- for General and OBC and Rs. 500/- for SC/ST/ PwD /EWS candidates. For online submission of application form visit websites www.cee.ncert.gov.in and follow the instructions carefully. The applicants must note that after submission of the application form it cannot be withdrawn. Claims for refund of application fee will not be entertained. For filling and submitting the application form, please go through the following general information:

- 1.Ensure that you fulfil all the eligibility criteria for the admission to B.Sc.B.Ed./ B.A. B.Ed./ B.Ed. / M.Sc.Ed. /M.Ed.
2. Application form must be completed in all respects. Incomplete application formwill be out rightly rejected and there will be no further correspondence in this regard. 3.Option once selected in the application form cannot be changed later.
- 4.The application fee is non-refundable.
- 5.The application form duly completed in all respects could be saved as a pdf and in case of selection a printed copy of the same with all the enclosures to be submittedto the respective centres during admission.
- 6.No written acknowledgment will be given for the receipt of the application. However, the candidate can verify application status on CEE-2021 website at <https://cee.ncert.gov.in/Default.aspx>.
- 7.Year of passing / appearing qualifying examination should be selected. For Date of Birth, enter the date, month and year of your birth as per the English calendar and as recorded in your 10th certificate using 01 to 31 for date and 01 to 12 (January to December) for month and the four digits for the year.
8. You have been given list of the centres where the centre for the common entrance examination will be located. Select any three city codes from the list. Your first preference must be entered first, then second and thereafter third.

9. During the common entrance examination bilingual (English/Hindi) question paper will be provided except for language proficiency.

10. Write the complete postal address. The address must include your name, c/o name and full address with PIN code. Write your mobile no. also through which messages can be sent or contacted if required. E-mail address must be written clearly using small letters.

11. Your recent colour photograph of appropriate size should be uploaded in the given box.

12. Please read the disclaimer given on printed form carefully. By signing the form candidate abides with the declaration. Please note that this signature will appear in your admit card and will be verified during the examination.

13. Candidates can pay the fee online using net banking, debit card, credit card. 14. Please pay entrance examination fee either through Online Payment (NetBanking, Card Payment).

State/UT of Domicile

Select the appropriate State /UT against which you are seeking admission. As a proof of eligibility of State/ UT for admission the candidate has to produce any one of the following documents:

a) Evidence of having passed the qualifying examination from the State/ UT as given in the advertisement.

b) In case of legal guardian / parents is an employee of State/ Central Govt./ Govt. of India undertaking/ Autonomous bodies the latest certificate of place of posting in the State/ UT.

c) A domicile certificate from the competent authority.

Candidates need to fill any one of the choices (a), (b) or (c).

Counselling and Admission

The Counselling and admission will be done in respective RIEs. The details of the counselling and admission procedures and dates will be available on the websites of concerned RIEs. For availability of number of seats for State/UTs please contact to RIE concerned/refer the seat matrix provided here.

Scholarships

All SC, ST and 50% of remaining students will be awarded scholarships as per NCERT rules on submission of parent's income certificate. Scholarships will be awarded on the basis of merit list of admission. Staying in hostel is compulsory for Scholarship holders.

FEE STRUCTURE

S.No.	Particular	Amount	Type
1.	Admission Fee/Re-Admission Fee	500/-	p.a.
2.	Tution Fee	5000/-	p.a.
3.	Medical Fee	250/-	p.a.
4.	Game Fee	250/-	p.a.
5.	Magzine Fee	200/-	p.a.
6.	Caution Money (Institute)	1000/-	Refd.
7.	Identity Card Fee	150/-	p.a.
8.	School Based Experience	Nil	Nil
9.	Computer Lab Development	800/-	p.a.
10.	Campus Placement Cell	Nil	Nil
11.	Red Cross	50/-	p.a.
12.	Leave Book	Nil	Nil
13.	Room Rent (Hostel)	5000/-	p.a.
14.	Water & Electricity Charges	4000/-	p.a.
15.	Student Activity Fund	Nil	Nil
16.	Caution Money (Hostel)	2000/-	Refd.
17.	Institute Development Fund	2000/-	p.a.
18.	University Enrollment Fee (MP)	130/-	One Time
19.	University Enrollment Fee (out of MP)	295/-	One Time
20.	Migration Fee	Nil	Nil
21.	Eligibility Fee	Nil	Nil
22.	Online Portal Charges	50/-	p.a.
23.	WWC FEE	Nil	Nil
24.	Student Union Fee	Nil	Nil
25.	Student Council Fund	500/-	p.a.
26.	Institute's Internal Examination	200/-	p.a.
27.	Laboratory Fee	500/-	p.a.
28.	Library Fee	500/-	p.a.
29.	Syllabus Fee	100/-	p.a.
30.	Student Welfare Fund	200/-	p.a.
31.	Cultural Activity Fee	500/-	p.a.
Grand Total		24175/-	

DEPARTMENTS AND FACULTIES

Principal:

Prof. Jaydip Mandal

Department of Education (DE)

The department provides training inputs into the pre-service and inservice teacher education programmes to meet the professional education components. Faculty members are specialized in the areas of Educational Philosophy, Educational Sociology, Educational Psychology, Inclusive education, Information and Communication Technology (ICT) Health and Physical Education, Art Education, Population Education, Curriculum and Evaluation, School Management and Planning, Teaching Skills and Strategies, Educational Research and Guidance & Counselling .

The department regularly organizes in-service training programmes for educational functionaries of the States and UTs of Western Region. The department also undertakes major responsibilities in the implementation, monitoring and evaluation of centrally sponsored programmes such as SSA, RMSA, ICT and NAS .

Several individual and collaborative research projects are undertaken by the faculty members in the major areas of school education and teacher education. Most of its faculty members are registered under the Barkatullah University, Bhopal for guiding doctoral research leading to Ph.D. degree in Education.

The department has a fully-equipped Psychology and Guidance and Counselling. Laboratory for developing the skills required for administering and interpreting psychological tests for different levels and areas. The laboratory provides support to the research activities undertaken by its faculty members.

Faculties :

Dr. B. Ramesh Babu, Professor and Head

Dr. I.B. Chugtai, Professor

Dr. Ratnamala Arya, Professor

Dr. Sanjay Kumar Pandagale, Associate professor

Dr. N.C. Ojha, Associate Professor

Dr. Saurabh Kumar, Assistant Professor

Dr. Mahendra Barua, TGT (Physical Education)

Department of Education in Science and Mathematics(DESME)

The Department of Education in Science and Mathematics undertakes the activities related to the improvement in science and mathematics education through applied and action researches. The faculties of the department are responsible for development of science and mathematics curricula and its implementation. The Department of Education in Science and

Mathematics comprises five sections such as Physics, Chemistry, Mathematics, Botany and Zoology. Most of the faculty members of DESM are registered under the Barkatullah University, Bhopal for guiding doctoral research leading to Ph.D. in Science and Mathematics. Faculty members are also actively involved in conducting research in various areas of school science education and mathematics. The faculties, besides undertaking research in basic sciences, have established a strong base in research and innovative practices in science education.

All the sections have well-equipped laboratories with modern equipment and facilities for effective execution of practical components of the B.Sc. B.Ed. course. The Botany and Zoology section maintain well-represented museums with rare and unique specimens along with a green house and Plant Tissue Culture Laboratory.

Faculties:

Dr. Rashmi Singhai, Professor (Chemistry) and Head

Dr. Lallan Kumar Tiwary, Professor

(Chemistry) Dr. Jaydip Mandal, Professor

(Botany)

Dr. Chitra Singh, Professor (Chemistry)

Dr. R.P. Prajapati, Associate Professor (Chemistry)

Dr. Ashwini Garg, Associate Professor (Mathematics)

Dr. Rashmi Sharma, Associate Professor (Chemistry)

Dr. Daksha Parmar, Assistant Professor (Botany)

Mr. Aji Thomas, Assistant Professor

(Mathematics) Dr. Kalpana Maski, Assistant

Professor (Physics) Mr. L.S. Chauhan, Assistant

Professor (Physics) Dr. Shivalika Sarkar, Assistant

Professor (Physics) Mr. Sandeep Ratnere, WET

(Electrical)

Department of Education in Social Sciences and Humanities (DESSH):

The department of Education in Social Sciences and Humanities undertakes the activities related to the improvement in social science subjects viz. Geography, History, Political Science, Economics, Commerce and Languages through development and research. The faculties of the department are also responsible for development of curricula of various subjects under social science and languages. The faculty members of the DESSH are from the areas of Geography, History, Political Science, Economics, Commerce and Languages. The language unit of DESSH comprises five languages: Hindi, English, Urdu, Marathi and Gujarati. The faculty members of DESSH are registered under Barkatullah University, Bhopal for guiding doctoral research leading to Ph.D. in various disciplines.

The department has a Geography Laboratory to facilitate learning among teacher trainees and in-service teachers. An arts Resource Center is the recent addition in the department. A

multimedia multilingual language resource center is a special feature of the department. It caters to language learning of both pre-service and in-service teachers of western region.

Faculties:

Dr. Nidhi Tiwari, Professor (English) and Head

Dr. Suresh Makwana, Assistant Professor (Gujarati)

Dr. Shruti Tripathi, Assistant Professor (English)

Dr. Soyhunlo Sebu, Assistant Professor (Geography)

Dr. Sangeeta Pethiya, Assistant Professor (History)

Dr. Arunabh Saurabh, Assistant Professor (Hindi)

Dr. Ganga Mahto, Assistant Professor (English)

Department of Extension Education (DEE)

The department organizes in-service teacher training programmes for educational functionaries at various levels in the western region. The department has the responsibility of looking after different extension programmes pertaining to research, development and training. It also has the responsibility of dissemination of the various schemes and activities of the institute, through seminars, conferences and workshops.

Faculties:

Dr. Chitra singh, Professor and Head

Dr. Sarika C. Saju, Professor (Sociology)

FACILITIES AT THE CAMPUS

Educational Technology Cell / ICT lab

Studio

There is well designed lab for Students, Teachers and Researchers. We have two ICT-enabled labs and one ET lab with modern and innovative facilities which comprises of total 115 computers with updated software's. We have 100 MBPS NKN and 8 MBPS leased line connection which makes internet access fast and convenient. Our labs have 3 enabled Wi-Fi. and over all 36 Wi-Fi connections in the organization. Also we have 19 SmartClassrooms. All national and International programs, conferences, workshops and hand- on sessions for teachers as well students are organized that enable them to update their knowledge in the field of computer technology. It helps students and teachers to learn and acquire new technology and skills to become more logical, creative and updated.



The ICT Studio at Regional Institute of Education, Bhopal is a vital component of the institute. It was established through a collaboration with CIET, New Delhi, with the primary aim of designing and producing audio-video e-content relating to school and teacher education. The studio is also responsible for conducting live educational TV programmes which are transmitted in the PM eVidya channels of the Ministry of Education, Govt. of India. The ICT studio at RIE Bhopal also documents all institutional activities and programs through photos and videos. The studio supports State Governments under RIE, Bhopal's jurisdiction in the capacity building of state resource persons on the development of e-content. During the Covid-19 pandemic, the studio contributed significantly by producing e-content on different school subjects to facilitate remote learning.

The ICT studio has also documented programs of students and faculty during various academic extension, training, and research activities of the institute. The studio is headed by a Nodal Officer who oversees all activities and programs of the studio. The Nodal Officer is supported by a team of professionals including a Producer, Production Assistant, Sound Recordist, Audio Engineer, and Camera Man].

Dispensary

A Health Care and Dispensary on the campus takes care of the health needs of the students and the staff.

Two-part time Medical Officers, one full time compounder, a lady pharmacist and an attendant are available at the centre for consultation and medical help.

RIE Library



The Institute has a well-equipped and well managed Library and Learning resource Center. Members of the faculty and staff, students and research scholars of the Institute, members of staff at Demonstration School and the participants of various programmes take advantage of the facilities made available by the library. It has a collection of about 70,000 Print and 1,25,000 online books on various subjects. The Institute also subscribes to about 150 journals/periodicals, both Indian and foreign. The library also offers various services, such as procuring books from other libraries on Inter-Library Loan, Photostat facility at nominal charges and provides up-to-date computerized information to the staff and the students.

Services:-

- | | |
|--|--|
| <ul style="list-style-type: none">• Online Databases• Institutional Repository Services.• Computerization of circulation services using Bar-coded Library cards.• LIBSYS Software platform for Retro-conversion.• On-line Public Access Catalogue Search Service. | <ul style="list-style-type: none">• Multi-media Corner.• Wi-Fi Internet services• New Arrival service (online).• Library under CCTV Surveillance.• Barcode Based Circulation service.• On-line books and journals |
|--|--|

Language Resource Center

The Regional Institute of Education (RIE) Bhopal is equipped with a state-of-the-art Language Resource Centre (LRC) that has been catering to the needs of teacher trainee students for many years. The LRC is equipped with the latest technologies, including computers, multimedia projectors, audio and video recording systems, and language lab software that help students improve their language skills.

The LRC provides a variety of materials and resources, including books, newspapers, magazines, and audio-visual materials, to help students improve their language proficiency. The centre also conducts language workshops and seminars, which provide a platform for students to interact with language experts and improve their language skills. The LRC also offers language courses in different languages, including English, Hindi, and other regional languages, to meet the diverse needs of the students.

The LRC is an integral part of the RIE Bhopal curriculum and plays a vital role in improving the teaching and learning experience of the students. The LRC helps in enhancing the language skills of teacher trainee students, which in turn helps them in imparting quality education to their future students. The centre also helps in developing the digital literacy skills of the students, which are essential in today's technological era.

In conclusion, the presence of the fully equipped Language Resource Centre on the RIE Bhopal campus has been a significant asset to the teacher trainee students. The centre provides a variety of resources and materials, conducts language workshops and seminars, and offers language courses that help in improving the language proficiency and digital literacy skills of the students. The LRC has been instrumental in enhancing the teaching and learning experience of the students and preparing them for their future careers.

STEAM Park



The STEAM Park at Regional College of Education, Bhopal is a facility that helps trainee teachers and students learn about scientific concepts in a fun and interactive way. The park is designed to provide a practical and hands-on learning experience for all visitors, including trainee teachers and students. The park features various scientific models and exhibits, which are designed to help visitors understand complex scientific concepts in a simple and easy-to-understand manner. Additionally, there is a garden of medicinal plants that visitors can explore to gain a better understanding of their usage in daily life. The park provides a fun and engaging way for trainee teachers to learn about different scientific concepts and incorporate them

into their teaching. For students, the park serves as a fun and interactive way to learn about science and understand the principles and phenomena that govern the natural world. Overall, the STEAM Park at Regional College of Education, Bhopal is a valuable resource for both trainee teachers and students, providing an innovative and enjoyable way to learn about science.

Laboratories



The Regional Institute of Education (RIE) Bhopal has several well-equipped laboratories for various disciplines, including Psychology, Geography, Botany, Zoology, Mathematics, Chemistry, Physics, Agriculture, Languages, Guidance and Counselling, Human Performance, and Tissue Culture. The labs are equipped with modern ICT facilities to enhance the learning experience of students. In summary, the labs at RIE Bhopal provide trainee teachers with practical experience, hands-on learning, and modern equipment and resources to facilitate learning. Trainee teachers use these resources to gain practical experience in their respective fields, develop teaching strategies, and enhance their understanding of the subject matter.

The Regional Institute of Education (RIE) Bhopal has several well-equipped laboratories for various disciplines, including Psychology, Geography, Botany, Zoology, Mathematics, Chemistry, Physics, Agriculture, Languages, Guidance and Counselling, Human Performance, and



Hostel



The Institute provides residence to all students in five furnished hostels (two for boys and three for girls). The total intake capacity of four hostels is approximately 750 students. All the hostels are situated in a serene atmosphere and well designed with a congenial study climate. A mess is attached to each hostel and food served to students is as per a stipulated menu. Discipline and character are the paramount objectives of these hostels as this Institute prepares prospective teachers. Every hostel is managed by a duly elected hostel executive committee under the supervision and guidance

of faculty members of the institute. The five Hostels are:

Bharat Ratna Shri Atal Bihari Vajpayee Gyan Niketan Hostel. (Girls)

Gurudev Rabindranath Tagor Shanti Niketan Hostel. (Girls)

Swami Vivekanand Kirti Niketan Hostel. (Boys)

Dr. C.V. Raman Vinay Niketan Hostel. (Girls)

Bharat Ratna Dr. B.R. Ambedkar Vidya Niketan Hostel. (Boys)



Chief Warden

Dr. Ashwini Kumar Garg

Wardens

Gyan Niketan (for Girls) - Dr. Shruti Tripathi

Shanti Niketan (for Girls) - Dr. Sangeeta Pethiya

Vinay Niketan (for Girls) - Dr. Kalpana Maski

Vidya Niketan (for Boys) - Mr. Lokendra Singh

Chauhan Kirti Niketan (for Boys) - Dr. Saurabh Mishra



Guest House

RIE Bhopal offers two guest houses for Resource Persons, Trainees and visitors in Gulmohar and Chinar. Gulmohar guest house is located within the institute campus and has 11 well-furnished and spacious rooms, available in deluxe categories. These rooms are



equipped with modern amenities such as air conditioning, televisions, and attached bathrooms. Additionally, the guest house offers room service and laundry facilities to ensure a comfortable and convenient stay for guests.

Chinar guest house is situated in a nearby residential area and offers 9 rooms with basic amenities such as air conditioning, televisions, and attached bathrooms. Similar to Gulmohar, Chinar guest house also offers room service and laundry facilities to provide a comfortable and hassle-free stay for guests.

Both guest houses are easily accessible and offer their services at NCERT approved rates. The staff at both guest houses are friendly, professional, and dedicated to providing the best possible service to their guests.

In summary, RIE Bhopal has two guest houses, Gulmohar with 11 rooms and Chinar with 9 rooms with some rooms in dormitory category, to provide comfortable and peaceful accommodation to Resource Persons, Trainees and visitors. The availability of two guest houses offers visitors a range of options to choose from based on their needs and preferences, and the amenities and services provided by both guest houses ensure a comfortable and pleasant stay.

Canteen



The canteen at RIE Bhopal near the college campus offers convenient and affordable nutritious food and serves as a social hub for students to relax and interact with peers. It provides a conducive environment for students to take a break from their academic activities and engage in conversations, while also providing a space for students to network during institute events. Overall, the canteen plays a pivotal role in supporting the academic and social needs of the student community, contributing significantly to their overall well-being.

Cooperative Store

RIE Bhopal's cooperative store is a convenient and essential resource for students, faculty, and staff members on campus. The store offers a range of goods, including stationery, textbooks, daily essentials, and snacks. The store's affordable prices make it an accessible option for students who may face financial constraints. Moreover, the cooperative nature of the store means that it is managed by a committee of representatives from among the students and staff members, ensuring that the store's operations align with the needs and interests of the campus community. The store's presence on campus eliminates the need for students to go off-campus to purchase essential items, saving them valuable time and money. The cooperative nature of the store also promotes a sense of community and encourages students to work together towards a common goal. The cooperative store's availability of textbooks and stationery ensures that students have easy access to necessary resources for their academic pursuits. The snacks and other daily essentials offered at the store also provide a convenient option for students who may not have the time or resources to go to the market.

Bank



The State Bank of India (SBI) branch located at RIE Bhopal is an important facility that provides financial services to the students, faculty, and staff of the institute. The Students of the Institute have easy access to the bank and a large number of existing as well past students have their bank account with State Bank of India, RCE Branch. The above saving account provide ease of operation for the students for fee payment, mess bill and other financial needs.

The SBI branch at RIE Bhopal offers a wide range of banking services, including savings and current accounts, loans, and deposits. The branch is equipped with modern banking technology, including online banking services, which makes it easy for customers to manage their finances. The SBI branch also provides various government and financial services, such as PAN Card, Aadhar Card, and Life Insurance policies.

The SBI branch at RIE Bhopal is easily accessible to the institute community, and its services are available during regular working hours. The staff at the branch is friendly and professional, and is committed to providing the best possible customer service.

Overall, the SBI branch at RIE Bhopal is an important facility that helps to meet the financial needs of the institute community. Its services are an essential part of the support system that makes the institute a comfortable and convenient place to live, work, and study.

Post Office



The post office situated at RIE Bhopal is an essential facility that provides postal services to the students, faculty, and staff of the institute. The post office is managed by Department of Post, Government of India.

The post office at RIE Bhopal offers a wide range of postal services, including mailing letters, parcels, and documents, as well as money transfer and bill payment services. The post office is equipped with modern postal technology, which makes it easy for customers to send and receive mail from anywhere in the world. The post office also provides other postal services, such as sale of

postage stamps, stationery, and packaging materials.

The post office at RIE Bhopal is easily accessible to the institute community, and its services are available during regular working hours. The staff at the post office is friendly and professional, and is committed to providing the best possible customer service.

Overall, the post office at RIE Bhopal is an important facility that helps to meet the postal needs of the institute community. Its services are an essential part of the support system that makes the institute a comfortable and convenient place to live, work, and study.

CPWD

One of the key facilities available at RIE Bhopal is the Central Public Works Department (CPWD), which is responsible for maintaining the infrastructure of the institute. The CPWD provides a wide range of services including construction, renovation, maintenance and repair of buildings, electrical and plumbing systems, and landscaping. The CPWD also ensures that the buildings are in compliance with the relevant building codes and safety standards.

The CPWD at RIE Bhopal has a team of highly skilled professionals who are responsible for the upkeep of the buildings and grounds. They work tirelessly to ensure that the institute's infrastructure is in good condition and is able to meet the needs of the faculty, staff, and students. They carry out regular inspections and maintenance to ensure that the buildings and grounds are safe, functional and comfortable.

Apart from maintenance and repairs, the CPWD at RIE Bhopal also takes care of the construction and renovation of buildings. They work with the institute's management to plan and design new facilities, taking into account the needs of the students, faculty and staff. They also provide support for special projects such as setting up new laboratories, classrooms and other learning spaces.

In summary, the CPWD at RIE Bhopal is an essential part of the institute's infrastructure. Its professional staff ensures that the facilities are well-maintained, safe and functional. This

helps to create a conducive learning environment for students and a comfortable working environment for faculty and staff.

Transport

University has buses for convenience of the faculty and students.

Sports

Besides beautiful walking trails around the Campus, the University has good sports facilities for the students and staff. Badminton and table tennis courts are available to foster sporting skills. Outdoor Volleyball, Running track, Football Ground, Cricket Ground and Basketball Courts are available.



Fitness centre



RIE Bhopal has a well-equipped gymnasium, which is open to both boys and girls during specified timings. The gym is open from 7-8 AM in the morning and 6-7 PM in the evening for boys, and from 6-7 PM in the evening and 7-8 AM in the morning for girls. The gymnasium is equipped with all the necessary exercise equipment, such as weight training machines, treadmills, and stationary bicycles. The machines are maintained in good working condition and are

periodically

serviced to ensure

their optimal functioning. The gymnasium also has adequate lighting and ventilation, creating a conducive environment for exercise. The gymnasium is a popular place for students and staff to engage in physical exercise, promoting their physical fitness and overall health. The gymnasium is also a testament to RIE Bhopal's commitment to promoting a healthy and active lifestyle among its members.



COMMITTEES/CELLS/ASSOCIATION

Campus Placement Cell

The Campus Placement Cell at the Institute works for the placement of students. The students of B.Sc.B.Ed. and B.Ed. have been well placed at KVs, JNVs, DAVs, Atomic Energy B.Ed. Society and similar other reputed schools of the country. The students of DGC have been recruited as counsellors at schools and organizations that look for them. The students of M.Ed. (RIE) have been employed as teacher educators at different Teacher Training Colleges/Institutions. Many students of B.Sc.B.Ed. and B.A.B.Ed. have been selected as TGTs in private residential schools of M.P. and Chattisgarh.

Guidance and Counselling Cell

The Institute has a guidance and counselling cell to provide support to students in their career choices and to guide and counsel them on their various day to day personal and academic problems. Guidance and counselling expert are invited as per requirement. The cell also possesses a good number of psychological tests for diagnosis purposes.

Research Cells

The institute has two research cells - one for academic researchers doing research at Master and Ph.D. levels; and the other for researchers doing institutional and externally funded researchers. The academic research cell is also open to the researchers outside the institute. It is equipped with thesis, research reports, survey reports prepared from time-to-time by the faculty members of the institute. These cells remain open beyond institutional hours.

Educational Technology and ICT cell

The institute has an ET and two ICT cells equipped with various technology resources like desktop computers, Smart boards, LCD projectors, video recorders, camera, audio-video cassettes etc. A well equipped studio for development of e-content and video films is also the part of the institute.

Anti-ragging Cell

As per the guidelines of UGC under the Act of 1956 (*Mentioned in Appendix I*), which is modified as UGC regulations on curbing the menace of Ragging in higher Educational Institutions, 2009, establishment of Anti-Ragging Cell is compulsory. An internal committee has been set up at RIE Bhopal, which takes care of issues related to ragging. The Institute has a zero tolerance policy towards ragging-related matters. All issues in this regard are dealt with utmost urgency and stringent action is taken against those who are involved. A copy of UGC Regulations on curbing the menace of ragging have been distributed to all students upon admission and have procured undertakings and affidavits from the students as well as parents in this regard. Unabridged version of the UGC Regulations in this regard can be accessible at <http://bit.ly/UGC-Ragging>.

Committee Against Sexual Harassment

An Internal Committee has been set up at RIE Bhopal as per provisions of Sexual Harassment of Women at Workplace (Prevention, Prohibition, Redressal) Act 2013, with the following aims:

- To ensure that no female employees (including permanent, temporary, and contractual employees) or female students are subjected to gender specific discrimination or sexual harassment.
- To provide a platform for all individuals to register a complaint if they are subjected to any act of sexual harassment at RIE Bhopal.
- To investigate and recommend action against any individual found guilty of harassing another individual of any gender.
- To facilitate a gender-sensitive and congenial working environment at RIE Bhopal so that individuals can work in an atmosphere free of gender specific discrimination.

Tobacco Prevention Cell

Tobacco and tobacco products are a curse to the society and the world has recognized it for long. Countries all over the world have been initiating various measures to curb this menace. India has also been in the forefront to fight this social evil. The Tobacco Prevention Cell aims to:

- Ensure that no Tobacco products of whatever nature are sold within 400 yards measured radially starting from the outer limit of the boundary wall or fence of the college.
- Set the law in motion against the violators of the provisions of COTPA and its allied rules.

The action of the above shall be taken within fifteen days from the date of receipt of the information regarding the violation.

National Service Scheme



The Regional Institute of Education (RIE) Bhopal is known for its commitment to providing quality education and fostering the overall development of its students. In this regard, the institute has established a National Service Scheme (NSS) wing on its campus, which provides separate wings for both girls and boys to engage in various social service activities. The NSS conducts a range of activities, including blood donation camps, green campus clean campus drives, no-plastic campaigns, plantation drives, and village adoption

programs. The NSS also celebrates significant events such as Gandhi Jayanti and NSS Day on 2nd October and 24th September, respectively. The NSS has been a crucial part of the RIE Bhopal campus, providing students with a platform to serve society and develop a sense of responsibility towards their community.

National Cadet Corps



The Regional Institute of Education (RIE) Bhopal has long been committed to providing its students with a holistic educational experience. As part of this commitment, the institute is home to a National Cadet Corps (NCC) Army Wing of 4 MP Battalion. The presence of the NCC has had a positive impact on the student community, with its various activities and events promoting the values of patriotism, discipline, and leadership.



One of the most significant events organized by the NCC is the NCC Day, which takes place on the 4th Sunday of November every year. This day is marked

by a parade, cultural events, and competitions that celebrate the spirit of nationalism and patriotism among the students. The 'Run for Unity' marathon, another event organized by the NCC, promotes national integration and pays tribute to Sardar Vallabhbhai Patel, India's first Deputy Prime Minister.

The NCC also conducts no-smoking campaigns, which raise awareness about the harmful effects of smoking on health. Cultural programs organized by the NCC showcase India's diverse culture and heritage, providing a platform for students to develop their talents and skills in various art forms. A yearly camp organized by the NCC provides students with the opportunity to learn survival skills and develop leadership qualities and teamwork. The weekly parade conducted by the NCC instills discipline and punctuality among the students while emphasizing the importance of physical fitness and overall wellbeing.

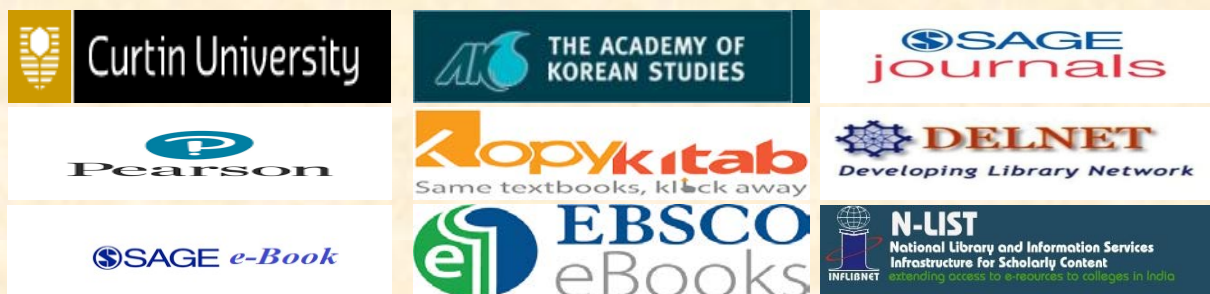
In conclusion, the NCC Army Wing of 4 MP Battalion promotes the values of patriotism, discipline, and leadership while fostering a sense of community and encouraging personal growth.



Institute's Salient Features

MoU

Institute has signed MoUs with 15 reputed organisations:



List of colleges with which MoU is signed:

1. Govt. College Akoda, Bhind.	4. Govt. Maharshi Arvind College, Gohad
2. Govt. Nehru College Sabalgarh, Murena	5. Govt. Law College, Datia
3. Govt. Gandhi College, Balaji Mihona, Bhind	6. Govt. College Indergarh

Feedback System

Teaching and learning is a continuous process in which teacher and student develops a bond. Teachers keep getting new students year after year and with the passage of time gain rich experience. In order to improve her/his competence in teaching and/ or research she/he needs the feedback from the students. The students can provide their feedback at the end of every Semester for each Course by hiding their identity. The feedback form is to be filled online, the data of which is kept confidential and is used only for improvement purposes.

Code of Conduct

Hostel Rules for Residential Students

The Regional Institute of Education, Bhopal provides well organised hostel facilities for both girls and boys separately within the institute campus. The hostel provides accommodation, nutritious food and filtered water to all students. The rooms are furnished with table, chair, cot and fan. Every hostel has two resident wardens to look after the hostel activities. A Chief Warden is there for the overall supervision of all hostels. Each hostel has separate mess, supervised by the Students' Mess Committee and warden of the concerned hostel and mess account is maintained by the hostel clerk. Application for admission to the hostel shall be made in the prescribed form. The allotment of hostels to the desired student will be on the basis of the following criteria:

1. Hostel facility will be provided to the students purely on the basis of availability of accommodation in hostels.
2. He/she should be a bonafied student of the college. Students who has year back will not be provided the hostel facility.
3. Record of the student for previous years to be good. He/she should have no financial outstanding against any hostel. He/she should not have any record of indiscipline in the hostel.
4. Ensure that he/she has deposited the hostel mess dues in advance for the whole year.
5. NCERT scholarship holders will avail the hostel facility provided they have paid the mess dues in advance.
6. Student of any course and any semester may be allotted 3 seater room in hostel.
7. Student having residence in Bhopal city will not be provided hostel facility. Exemptionis for NCERT scholarship holders only.

For running the hostels successfully following rules were formed by the Institute level committee:

1. During the class hours i.e. from 9.00 AM to 5.30 PM (excluding the lunch break) students are not allowed to stay in the hostel.
2. Motor cycles/scooters and four wheelers are not allowed to be kept by students in the hostel premises.
3. Boarders have to ensure that the common taps and switches are closed/off. All the switches of the room must be put off before leaving the room.
4. The following actions will be deemed as breach of discipline.
 - a) Absence from the hostel or leaving campus (including class hours) without leave/permission.
 - b) Singing or playing of any musical instrument, transistor, tape recorder, talking on cell phone at high pitch etc.
 - c) Writing on or disfiguring the walls, doors or windows of the hostel building.
 - d) Direct action taken by a boarder against other boarder or hostel office bearer, cooks etc.
 - e) Misconduct of any other kind that tarnishes the prestige of the Institute.
 - f) Inviting guests/outsideers without prior permission of the warden.
 - g) Keeping weapons, explosives, dangerous chemicals etc. in the hostel.
 - h) Tampering with electric wiring and fittings.
 - i) Keeping and consuming intoxicated items in the hostels.
 - j) Any misbehavior (including eve teasing) in the institute campus.
 - k) Not reporting on the reopening day of the Institute without prior permission.
 - l) Circulating objectionable material through social networking sites.
5. Students are not allowed to go out of the campus during college hours (i.e. 9.00 AM to 5.30 PM), Monday to Friday.
6. Hostels are closed during semester break. All boarders should vacate the hostel/rooms during the semester break.

Disciplinary action to the extent of expulsion from the hostel/Institute may be taken against those who show willful negligence and disregard for the discipline.

Mess Rules:

1. Mess advance (as fixed at the beginning of the year or time to time) to be deposited in the hostel account at the time of admission/re-admission in hostel or after notification.
2. Taking food in hostel mess is compulsory for all boarders.

3. Weekly menu prepared by mess committee is to be displayed in the dining hall.
4. Mess timing will be decided by the wardens.
5. Quality of food will be checked by the mess committee regularly and any complaint about quality will be brought to the notice of the warden.
6. Boarders are required to take their meals and breakfast in the dining hall only.
7. Boarders should maintain discipline while taking meals.

Additional Rules:

1. The hostel gate (Hostel main gate) will be open for students from 6.00 AM to 8.00 PM (November to February 6.00 AM to 7.30 PM) every day (except exceptional situations). However, students gone out of campus must come back to the campus and report to the respective hostel by 8.00 PM (November to February 6.00 AM to 7.30 PM).
2. The hostel grill (Hostel channel gate) will be open for students from 5.30 AM to 10.00 PM every day (except exceptional situations). However, students gone out of campus must come back to the respective hostel by 8.00 PM (November to February 7.30 PM).
3. At the time of going out of the campus, the boarder has to enter her name in the 'going— out' register at hostel gate and Gate Number 1 indicating the place, time of leaving hostel/campus.
4. Only Gate Number 1 of the institute should be used for going and coming out of campus.

Important Links:

WEBSITE	LINK
RIE BHOPAL	https://riebhopal.nic.in
NCERT	https://ncert.nic.in
NCERT-CEE	https://cee.ncert.gov.in
DCGC COURSE GUIDELEINES	ncert-idgc.org
UGC ANTI-RAGGING GUIDELINES	http://bit.ly/UGC-Ragging http://www.antiragging.in

Admission Enquiry, please contact Admission
Cell at +91 (0) 755 2522012

विद्यया ऽ मृतमश्नुते



एन सी ई आर टी
NCERT

Regional Institute of Education

(Since 1963)

Shyamala Hills, Bhopal - 460 003 (Madhya Pradesh), India

Website: <https://nebhopal.nic.in/>

Email: Principal@nebhopal.in

Telephone: +91 (0) 755 2522003 (001)